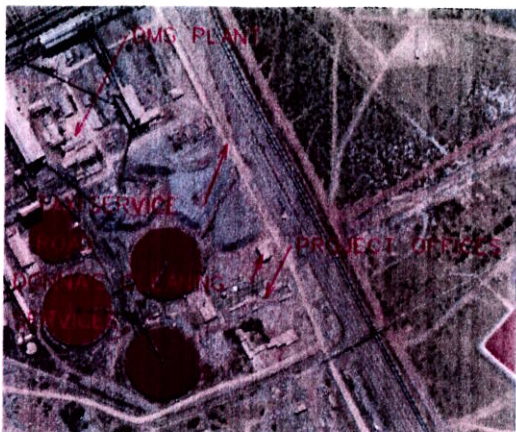


UPGRADE OF SISHEN PROJECT OFFICE



Area where the Project Offices are situated

Upgrade and extension of offices

The Sishen Projects Department was newly established on the mine during 2010 and there was not enough office space available to house the team.

With the upgrading and extension of the old SEP JV offices, the much needed office space for the Projects Department will ensure a more sufficient work environment where all the personnel in the department can integrate with one another to meet the demand of project delivery on the mine. The project home will cater for all project management teams and supporting services and activities as well as meeting rooms and archiving facilities for project documentation.

Office buildings and the area around the offices will be wheelchair friendly.

The Project Sponsor is Gerrit Brits and the Project Owner is Jacques van Rooyen, the Project Support Office (PSO) Manager.

Construction

Abacus Space Solutions, the appointed contractor, is currently progressing well to complete the erection of the pre-fabricated offices by the 15th of July 2011. The installation of network cables, telephones, printers, electrical power and tiling of the offices will be completed by the beginning of August 2011.



THE LETTER COLUMN

Living our Company's Values

Monday morning 07h15 began with observing an employee walk directly through a demarcated area only for busses, directly behind a reversing bus – fortunately the driver saw her - then she walked directly over the road, not looking for a pedestrian crossing. She endangered her life on two occasions and when I did a STEP said she was in a hurry to go to a meeting and was not thinking. Is this not a learning point for all of us? We could have had an LTI on our hands or even worse.

Think before you do anything. Do not be in a hurry. **BE FOCUSED** in everything you do here at Sishen.

We have to adhere to Sishen's rules and regulations as they are for our own good. Do not justify why you have done something wrong. We ended our conversation with a hug. I hope I can show more Care and Respect in future when doing STEP's and she can show more Accountability when walking around on the mine.

Heather Jennings
SHEQ Systems



Switch off. Recycle. Save water. Plant indigenous trees. Change!